

CHROME
SERIES®

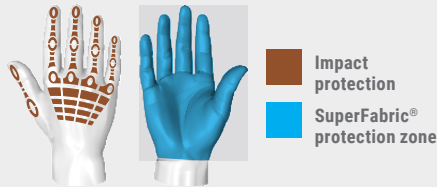
HexArmor®

4035IMP

Chrome Series®: Our signature mechanic's style glove line that redefined cut protection, impact resistance, and dexterity in the safety industry.

The Chrome Oasis® 4035IMP combines a mechanic's glove chassis with added back-of-hand HexVent® material to deliver some of the best cut and impact protection on the market, all while helping to prevent overheating from your PPE. This advanced breathable technology supports our hi-vis impact-resistance system while the palm offers printed silicone synthetic leather grip and an interior layer of SuperFabric® brand material for superior safety and peace of mind. The standard pre-curve design and double-stitched seams provide added dexterity and durability.

Protection zones



ANSI/ISEA 105-2024
CUT

A8



ANSI/ISEA 105-2024
GRAM SCORE

5710



ANSI/ISEA 105-2024
PUNCTURE

2



ANSI/ISEA 105-2024
ABRASION

6



ANSI/ISEA 138-2019
IMPACT

2



ANSI/ISEA 105-2024
CONTACT HEAT

2

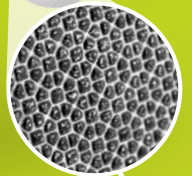


EN 388: 2016

4X21FP

Attributes

Style:	Mechanics
Grip:	Dry or light oil + fluids
Cuff style:	SlipFit® with hook and loop closure
Sizes:	6/XS through 12/3XL



Touchscreen



Warm
weather



SuperFabric®
inside

Product features

- SuperFabric®* brand material provides industry-leading cut, puncture, and abrasion resistance on the palm (interior layer)
- Printed silicone synthetic leather palm provides reliable grip in dry and light oil + fluids environments
- Back-of-hand impact protection system utilizes an advanced design to dissipate forceful blows over a large area, providing workers with Level 2 impact protection
- Breathable HexVent® material on the back-of-hand keeps hands cool
- Pre-curved construction, form-fitting, quality materials with reinforced thumb saddle and index finger wrap
- SlipFit® cuff with hook and loop closure for a secure fit
- Touchscreen-compatible full palm and fingers
- Hi-vis color scheme increases visual awareness
- Vend-packed

Call **1.877.MY ARMOR** or visit **hexarmor.com**

HexArmor® products are cut and puncture resistant, NOT CUT AND PUNCTURE PROOF. Do not use with moving or serrated blades or tools. User shall be exclusively responsible to assess the suitability of the product as specified for any individual application or use. Protection zones are to be used as a general guide. Actual product protection zones may differ. Product features, design, protection zones subject to change.

Protected by patents and patents pending

*SuperFabric® is a registered trademark of HDM, Inc.