

CHROME  
SERIES

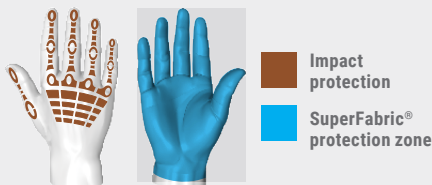
# 4086

HexArmor®

Chrome Series® Our signature mechanic's style glove line that redefined cut protection, impact resistance, and dexterity in the safety industry.

The Chrome Series® Arctic Leather 4086 offers a traditional leather feel while keeping hands warm and protected in the cold. An interior layer of SuperFabric® brand material delivers level A8 cut resistance and industrial puncture protection over a goatskin leather palm and back-of-hand impact protection. The 4086 includes an ultra-thin interior C40 Thinsulate™ liner, designed to perform well on hands frequently in motion while preventing hands from sweating or overheating.

## Protection zones



Impact protection  
SuperFabric® protection zone



ANSI/ISEA 105-2024  
CUT

A8



ANSI/ISEA 105-2024  
GRAM SCORE

5576



ANSI/ISEA 105-2024  
PUNCTURE

4



ANSI/ISEA 105-2024  
ABRASION

6



ANSI/ISEA 138-2019  
IMPACT

2



ANSI/ISEA 105-2024  
CONTACT HEAT

2



EN 388: 2016

4X23FP

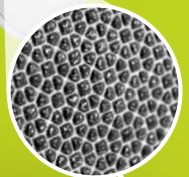
## Attributes

Style: Mechanics

Grip: Dry or light oil

Cuff style: Hook and loop

Sizes: 7/S through 11/XXL



Cold weather



SuperFabric® inside

## Product features

- Ultra-thin C40 Thinsulate™ interior liner helps keep hands warm while preventing sweating or overheating
- SuperFabric® brand material provides industry-leading cut, puncture, and abrasion resistance around the glove (interior layer)
- Hi-vis back-of-hand impact guards with advanced, low-profile design protects against smash and pinch hazards on the knuckles and fingers
- Goatskin leather palm provides a traditional style of comfort, dexterity, and grip
- Interior seams are reinforced with a double stitched core-spun thread, adding further durability and longevity
- Hook and loop wrist closure for a comfortable, secure fit
- Form-fitting, quality materials for increased dexterity and all-day comfort
- Vend-packed

Call **1.877.MY ARMOR** or visit **hexarmor.com**

HexArmor® products are cut and puncture resistant, NOT CUT AND PUNCTURE PROOF. Do not use with moving or serrated blades or tools. User shall be exclusively responsible to assess the suitability of the product as specified for any individual application or use. Protection zones are to be used as a general guide. Actual product protection zones may differ. Product features, design, protection zones subject to change.

**⚠ WARNING:** This product can expose you to leather dust and chromium (hexavalent compounds) which is known to the State of California to cause cancer and birth defects or other reproductive harm. For more information, go to [P65Warning.ca.gov](http://P65Warning.ca.gov)

Protected by patents and patents pending.

\*SuperFabric® is a registered Trademark of HDM, Inc.